



Online radioisotope detector



## The Most Advanced Radioisotope Detector for Liquid Chromatography

*Innovative Technologies*  
[www.AIMResearchCompany.com](http://www.AIMResearchCompany.com)



## Ultrasensitive Radioisotope Detection

**HPLC:** Detects peak width of 10-30 seconds

**UPLC:** Detects peak width of 3~5 seconds



v.ARC (neu-arc) radioisotope detector is the first radioisotope detector specifically designed for sensitive online radioisotope detection in HPLC (High-Performance Liquid Chromatography), UPLC (UltraPerformance Liquid Chromatography), and other high-resolution liquid chromatography with sub-micron particle packed columns.

### Detection Performance

- High efficiency: >95% (14C), >50% (3H, unquenched)
- Exceptional resolution: Able to resolve UPLC peaks well. Traditionally, LC UV resolution is much higher than RD. 250 uL, UV cell = uL~ nL. TOF for UV cell
- Low background: 0~3 CPM
- Consistent linearity
- Sensitivity: High FOM (figure of merit). Serial injection of low peaks.
- DynamicFlow technology: utilized to increase peak resolution and better peak width while reducing cocktail usage.

### Hardware Features

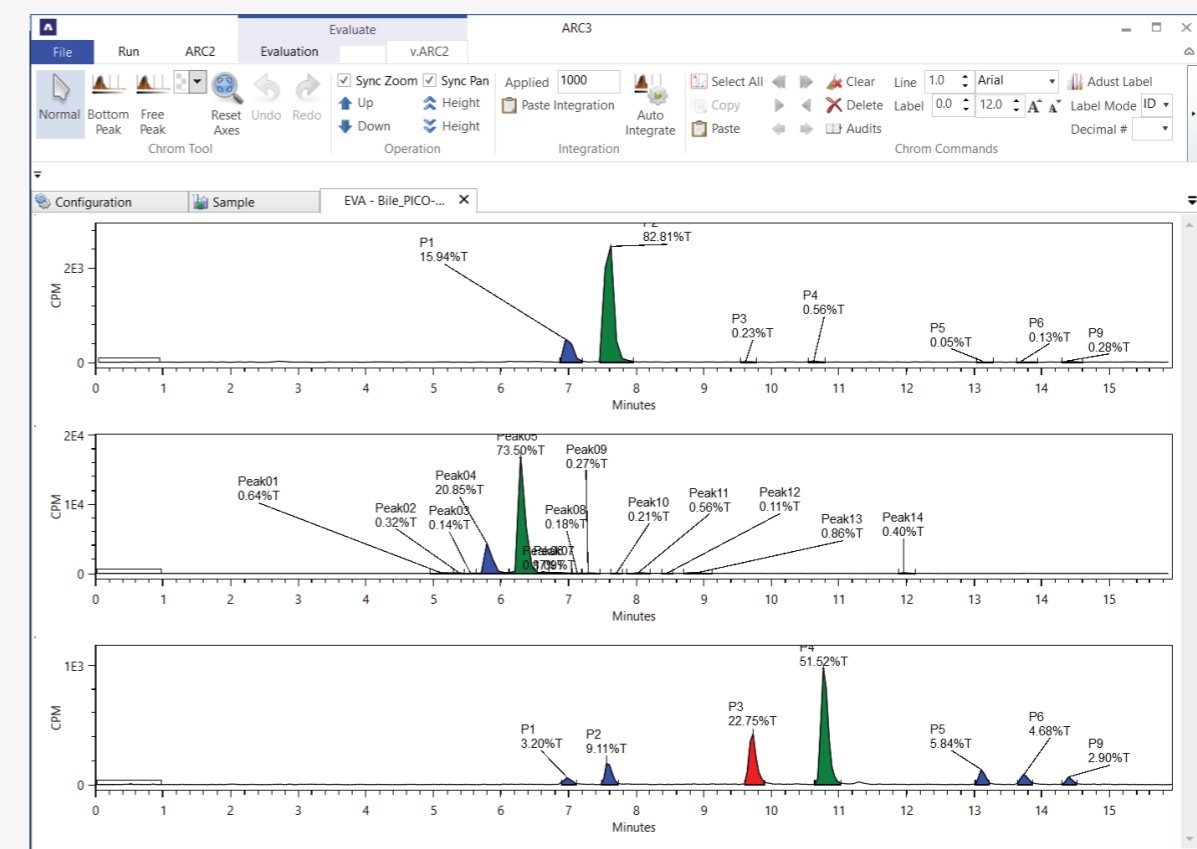
- Standard contact closure communication with other systems
- Analog voltage output and input: Standard analog voltage signal output that can be used as input to other systems and software. Also accepts analog voltage input from HPLC UV detectors.
- Waste Splitter: Separates radioactive waste from non radioactive waste. Allows users to separate their sample waste and reduce the cost of material disposal.
- Integrated precision pump for cocktail delivery (controlled by the detector)
- New and efficient flow cell design for maximum efficiency and resolution. Flow cells internal volume is customizable to meet any user needs.
- Dimensions: 14 × 9 × 6 1/2 inches
- Weight: 15Kg (30lb)

## Utilizes ARC3 Data System Software with Powerful Workflow Features

Instrument control, method and sample creation, data evaluation and reporting is all included in this updated version of ARC Data System, which includes new time-saving features for every type of user.

### Features

- Easy and simple interface with ability to switch between multiple setups and evaluations
- Manual or automated peak finding
- Summary peak data table
- Precise peak defining tools
- Copy and paste peak properties and data
- Customized reporting templates
- GLP and 21 CFR part 11 compliance options



# Dedicated to Improving Your Research

## Options to Fit Your Needs

With various customizable options, there is always a setup that will meet your research and application needs. Contact us to learn more.

## Extensive Customer Support

We are highly dedicated to our users with quick response times and communication. We support our customers in any setup and application they have.

## Get a Quote and Schedule a Demo

Interested in v.ARC? Go to our website at [www.AIMResearchCompany.com](http://www.AIMResearchCompany.com) to request a quote. Contact us to schedule a demonstration of our instrument in your lab environment by one of our knowledgeable service engineers.



**Contact Us** ✉

5936 Limestone Rd. Suite 302  
Hockessin, DE 19707

(302) 235-8701  
[sales@aimresearchcompany.com](mailto:sales@aimresearchcompany.com)

[www.AIMResearchCompany.com](http://www.AIMResearchCompany.com)

